

Breakfast Sandwiches

Served Mon-Fri 7am-3pm and Sat 9am-3pm

HAM, EGG AND CHEESE	6
TURKEY, EGG AND CHEESE	6
BACON, EGG AND CHEESE	6
SAUSAGE, EGG AND CHEESE	7
EGG AND CHEESE	4.5

BREAD OPTIONS: Cuban, White, Wheat, Bagel or Tortilla Wrap
Croissant +1

CHEESE OPTIONS: American, Provolone, Swiss or Cheddar

EXTRAS: Substitute with Egg White +1
Bacon +3 Meat +3 Cheese +1

VEGGIES: +1 Lettuce, Spinach, Tomato or Onion

CUBAN TOAST <i>with butter</i>	1.5
CUBAN TOAST <i>with cheese</i>	2.5
PLAIN TOASTED BAGEL	1.5
BAGEL <i>with butter or jelly</i>	2
BAGEL <i>with cream cheese</i>	2.5

Extra butter or jelly +0.5 Extra cream cheese +1

SIDES: Home fries +2 Cheesy potatoes +3

Sandwiches

Served Mon-Sat 11am-5pm

CUBAN SANDWICH	9
SLICED "MOJO" CHICKEN BREAST	9
HAM & CHEESE	8
TURKEY AND CHEESE	8
HAM OR TURKEY CLUB	10
TUNA OR CHICKEN SALAD	9
TUNA OR CHICKEN SALAD MELT	10
BLT	7
PASTRAMI AND CHEESE	10
VEGETARIAN SANDWICH	7

BREAD OPTIONS:
Cuban, White, Wheat, Bagel or Tortilla Wrap
Croissant +1

CHEESE OPTIONS: American, Provolone, Swiss or Cheddar

VEGGIES & CONDIMENT OPTIONS: Lettuce, Tomatoes, Onions, Pickles, Mustard and Mayo

EXTRAS: Deli meat +3 Cheese +1 Bacon +3

SIDES: French Fries +3 Chips +1.5
Fruit Salad +4 Soup of the Day +4

Salads

Served Mon-Sat 11am-5pm

CHEF SALAD 9
Romaine lettuce, tomato, juliane baked ham and turkey, shredded Swiss cheese, Spanish olives topped with parmesan cheese.

GARDEN SALAD *Starter 5 Bowl 8*
Romaine lettuce, tomato, Swiss cheese, Spanish olives, onion and green pepper topped with parmesan cheese.

GREENS AND SPINACH SALAD 8
Mixed of romaine lettuce, spinach, green pepper, and green olives, topped with parmesan cheese and croutons.

EXTRAS: Add Mojo Chicken +3

SALAD DRESSING OPTIONS: House (Italian style), Ranch and Bleu Cheese and Balsamic Vinaigrette

Hot Beverages

	Sm	Md	Lg
COFFEE <i>(Regular or Decaf)</i>	2.5	2.75	3.25
LATTE	3.5	3.75	4
CAPPUCCINO	3.5	3.75	4
MOCHA LATTE	4	4.25	4.75
AMERICANO	3	3.5	4.75
ESPRESSO <i>(2 oz)</i>	2.75		
EXTRA ESPRESSO SHOT	1.5		
CAFÉ CON LECHE	3		
CORTADITO <i>(Cuban Espresso and Cream)</i>	3		
HOT CHOCOLATE	3		
HOT TEA	3		

Cold Beverages

ICED TEA	2	2.5	2.75
ICED COFFEE	2.5	2.75	3
ICED COFFEE <i>(Cold Brew)</i>	2.75	3	3.5
ICED LATTE	3	3.5	4
ICED CAPPUCCINO	3	3.5	4
ICED MOCHA LATTE	3.5	4	4.5
MILK <i>(Regular or 2%)</i>	2	2.5	3

*Special Coffees and Beverages are mixed with regular or 2% milk
Almond or Soy milk +1 Flavor Coffee Syrups +.50*

Smoothies

(16 oz) 6 Add Protein +2

FLAVORS: Strawberry Banana, Mango
Banana, Piña Colada, Frozen Mocha, Vegan

Hot Coffee Drinks

IRISH COFFEE 7
Irish whiskey, brown sugar and whipped cream

JAMAICAN COFFEE 7
½ oz Rum, ½ oz Kahlúa and whipped cream

Gelato & Sorbet

Sm 3 Md 4

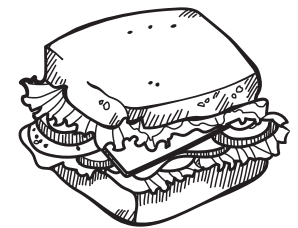
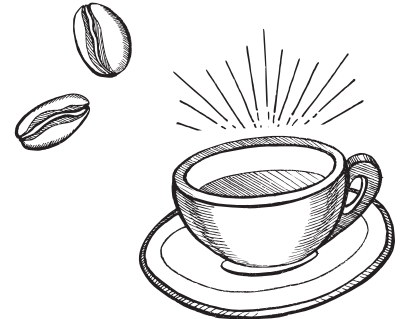
Cookies *Assorted* 1.25

Muffins 2.50

WE PROUDLY SERVE THE FINEST
CRAFT ROASTED COFFEE BY



BUDDY BREW
COFFEE
craftroaster



GELATO • COFFEE • SANDWICHES

FAST *Jacks*
ESTD 2009

601 S. HARBOUR ISLAND BLVD. • TAMPA, FL 33602 • (813) 549-2186 • JACKSONSBISTRO.COM
HOURS: MON – FRI 7AM-10PM • SAT & SUN: 9AM-10PM