

# Breakfast Sandwiches

Served Mon-Fri 7am-3pm and Sat & Sun 9am-3pm

HAM, EGG AND CHEESE	6
TURKEY, EGG AND CHEESE	6
BACON, EGG AND CHEESE	6
SAUSAGE, EGG AND CHEESE	7
EGG AND CHEESE	4.5

**BREAD OPTIONS:** Cuban, White, Wheat, Bagel or Tortilla Wrap  
*Croissant +1*

**CHEESE OPTIONS:** American, Provolone, Swiss or Cheddar

**EXTRAS:** Substitute with Egg White +1  
Bacon +3 Meat +3 Cheese +1

**VEGGIES:** +1 Lettuce, Spinach, Tomato or Onion

CUBAN TOAST <i>with butter</i>	1.5
CUBAN TOAST <i>with cheese</i>	2.5
PLAIN TOASTED BAGEL	1.5
BAGEL <i>with butter or jelly</i>	2
BAGEL <i>with cream cheese</i>	2.5
<i>Extra butter or jelly +0.5 Extra cream cheese +1</i>	

**SIDES:** Home fries +2 Cheesy potatoes +3

# Sandwiches

Served Daily 11am-5pm

CUBAN SANDWICH	9
SLICED "MOJO" CHICKEN BREAST	9
HAM & CHEESE	8
TURKEY AND CHEESE	8
HAM OR TURKEY CLUB	10
TUNA OR CHICKEN SALAD	9
TUNA OR CHICKEN SALAD MELT	10
BLT	7
PASTRAMI AND CHEESE	10
VEGETARIAN SANDWICH	7

**BREAD OPTIONS:**  
Cuban, White, Wheat, Bagel or Tortilla Wrap  
*Croissant +1*

**CHEESE OPTIONS:** American, Provolone, Swiss or Cheddar

**VEGGIES & CONDIMENT OPTIONS:** Lettuce, Tomatoes, Onions, Pickles, Mustard and Mayo

**EXTRAS:** Deli meat +3 Cheese +1 Bacon +3

**SIDES:** French Fries +3 Chips +1.5  
Fruit Salad +4 Soup of the Day +4

# Fresh Green Salads

**CHEF SALAD** 9  
Romaine lettuce, tomato, juliane baked ham and turkey, shredded Swiss cheese, Spanish olives topped with parmesan cheese.

**GARDEN SALAD** Starter 5 Bowl 8  
Romaine lettuce, tomato, Swiss cheese, Spanish olives, onion and green pepper topped with parmesan cheese.

**GREENS AND SPINACH SALAD** 8  
Mixed of romaine lettuce, spinach, green pepper, and green olives, topped with parmesan cheese and croutons.

**EXTRAS:** Add Mojo Chicken +3

**SALAD DRESSING OPTIONS:** House (Italian style), Ranch and Bleu Cheese and Balsamic Vinaigrette

# Hot Beverages

	Sm	Md	Lg
COFFEE <i>(Regular or Decaf)</i>	2.5	2.75	3.25
LATTE	3.5	3.75	4
CAPPUCCINO	3.5	3.75	4
MOCHA LATTE	4	4.25	4.75
AMERICANO	3	3.5	4.75
ESPRESSO <i>(2 oz)</i>	2.75		
EXTRA ESPRESSO SHOT	1.5		
CAFÉ CON LECHE	3		
CORTADITO <i>(Cuban Espresso and Cream)</i>	3		
HOT CHOCOLATE	3		
HOT TEA	3		

# Cold Beverages

ICED TEA	2	2.5	2.75
ICED COFFEE	2.5	2.75	3
ICED COFFEE <i>(Cold Brew)</i>	2.75	3	3.5
ICED LATTE	3	3.5	4
ICED CAPPUCCINO	3	3.5	4
ICED MOCHA LATTE	3.5	4	4.5
MILK <i>(Regular or 2%)</i>	2	2.5	3

*Special Coffees and Beverages are mixed with regular or 2% milk  
Almond or Soy milk +1 Flavor Coffee Syrups +.50*

**Smoothies** (16 oz) 6 Add Protein +2  
**FLAVORS:** Strawberry Banana, Mango  
Banana, Piña Colada, Frozen Mocha, Vegan

# Hot Coffee Drinks

IRISH COFFEE	7
Irish whiskey, brown sugar and whipped cream	
JAMAICAN COFFEE	7
½ oz Rum, ½ oz Kahlúa and whipped cream	

**Gelato & Sorbet** Sm 3 Md 4

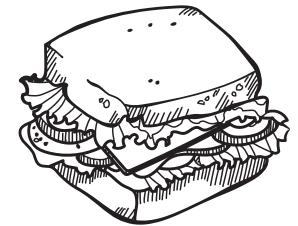
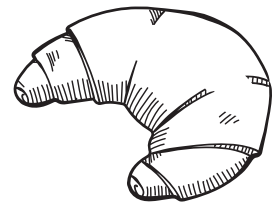
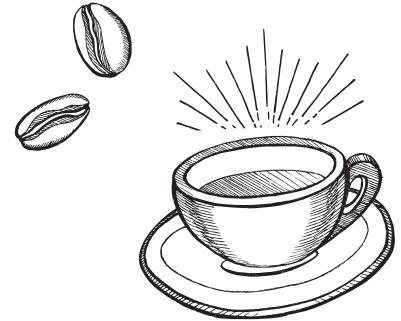
**Cookies** Assorted 1.25

**Muffins** 2.50

WE PROUDLY SERVE THE FINEST  
CRAFT ROASTED COFFEE BY



**BUDDY BREW**  
COFFEE  
*craftroaster*



GELATO • COFFEE • SANDWICHES

**FAST JACKS**  
ESTD 2009

601 S. HARBOUR ISLAND BLVD. • TAMPA, FL 33602 • (813) 549-2186 • JACKSONSBISTRO.COM  
HOURS: MON – FRI 7AM-10PM • SAT & SUN: 9AM-10PM